

## Stuff Happens. Fix it with SolarVu.

With panels and complex electronics exposed to severe weather, things can go wrong. Keep track of all equipment in your portfolio with one click access using [SolarVu](#).

The [SolarVu energy portal](#) emails you alarms when problems occur and sends daily status reports. Online Analyzer tools can **detect bad panels** or a failed string inverter to help you identify and fix problems quickly, reducing maintenance costs and restoring optimized performance.

SolarVu allows solar generation owners to monitor and identify problems as soon as they occur, then to dispatch O&M staff with the right solutions to fix the problems.



### MAINTENANCE

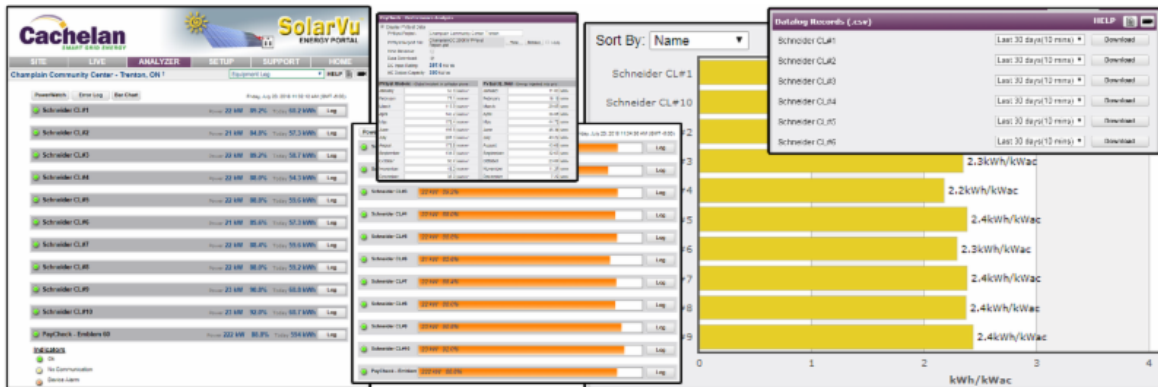
#### Alarms & Portfolio Output

See status of portfolio on one screen, navigate to sites with faults to analyze and fix problems.

### ASSET MANAGEMENT

#### Custom Reports

Select from over 40 parameters to generate custom reports for any time period in a spreadsheet or PDF format.



All Smart Strings features are included for the first two years following the purchase of a SolarVu<sup>®</sup> portal. After two years, monitoring remains free and lifetime data is stored, but some features of SmartStrings, advanced diagnostic Analyzer tools and reporting are available at a monthly rate with a [SurePoint<sup>™</sup>](#) subscription.